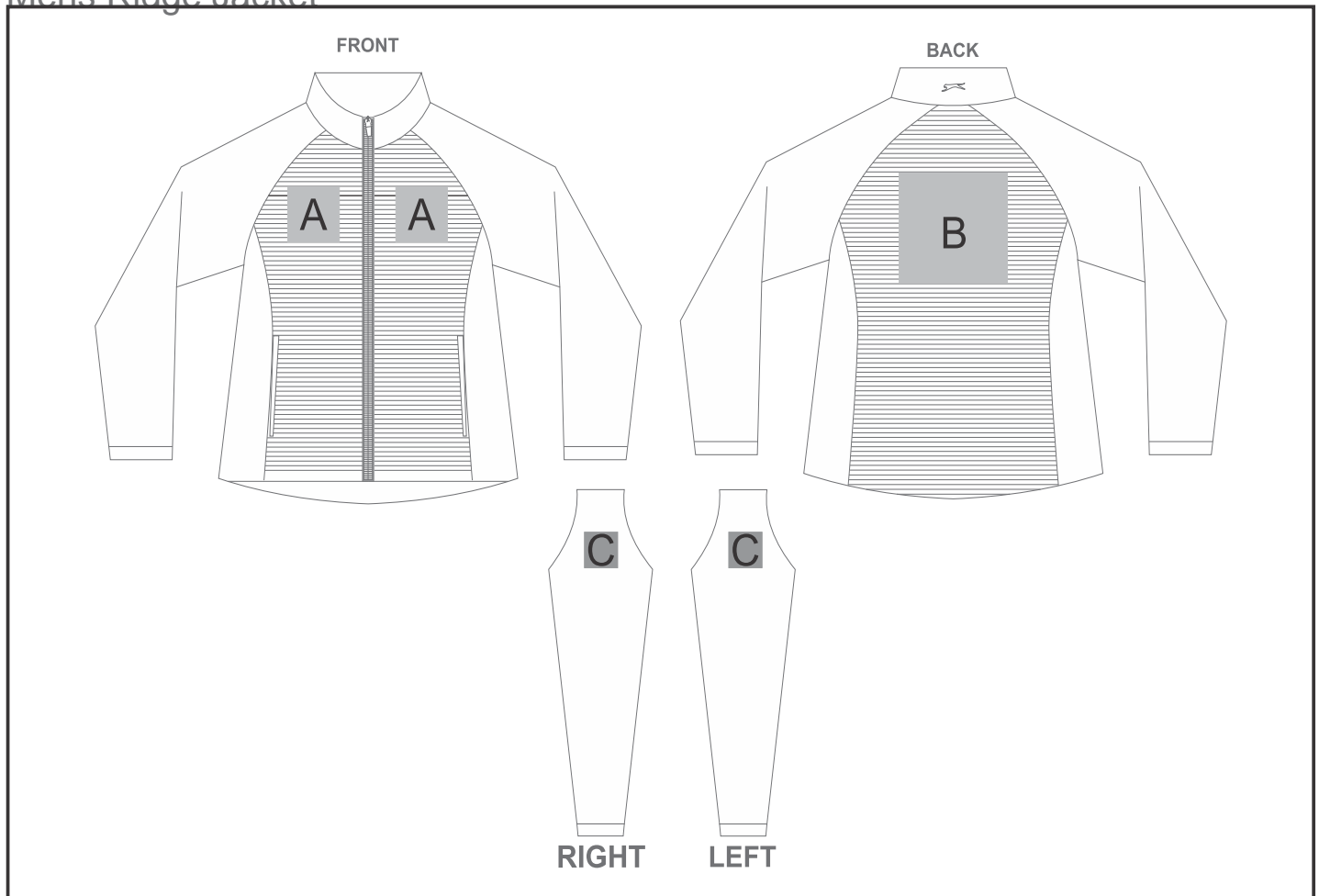


# SLAZ-11426

## Mens Ridge Jacket



### Need to know:

- Includes 1 Position Embroidery (setup fee applies)
- Cannot guarantee a 100% straight branding on any clothing item with check or stripe detail.
- The panels on the garment are inconsistent from Small to XL.
- The logo will be branded in the closest left / right chest and back panel, to the standard left/right chest and back position.
- DTC/EMB inclusive Parameters: Left/Right Chest or Back = 100mm x 100mm

### Branding Options:

| Position | Branding Method (Branding Code)       | No. of Colours | Dimension               |
|----------|---------------------------------------|----------------|-------------------------|
| A        | Embroidery (EM-CLOTHING)              | N/A            | 100mm wide x 100mm high |
| A        | Digital Transfer Clothing A6 (DTC-A6) | Full Colour    | 100mm wide x 100mm high |

|   |                                       |             |                         |
|---|---------------------------------------|-------------|-------------------------|
| B | Embroidery (EM-CLOTHING)              | N/A         | 100mm wide x 100mm high |
| B | Digital Transfer Clothing A6 (DTC-A6) | Full Colour | 148mm wide x 105mm high |
| B | Digital Transfer Clothing A5 (DTC-A5) | Full Colour | 210mm wide x 148mm high |

|   |                                       |             |                       |
|---|---------------------------------------|-------------|-----------------------|
| C | Embroidery (EM-CLOTHING)              | N/A         | 80mm wide x 80mm high |
| C | Digital Transfer Clothing A6 (DTC-A6) | Full Colour | 80mm wide x 80mm high |
| C | Screen Print (SC)                     | 6 Colours   | 80mm wide x 60mm high |